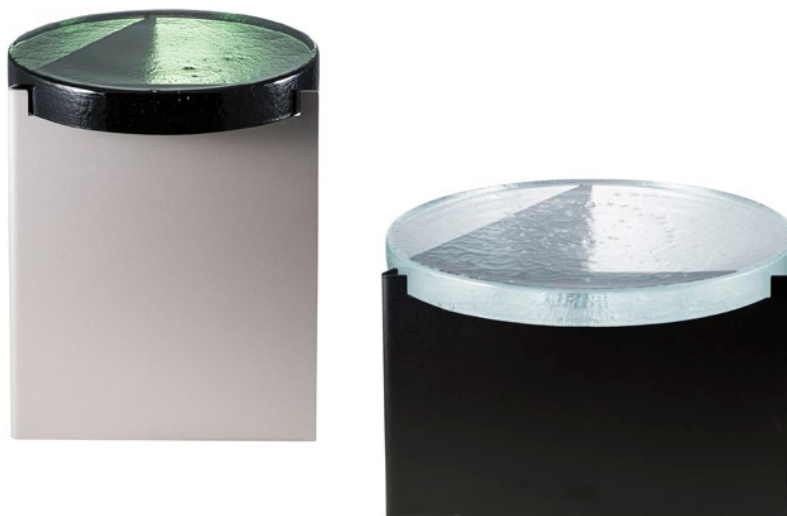


alwa one

by Sebastian Herkner
TABLES



Championing imperfection. Celebrating the beauty of each unique ripple, bubble and swirl. The alwa collection of coffee and side tables traps the movement of glass in a generous time capsule. Inspired by undulating surface water, the collection mixes a sturdy form with a soft aesthetic. Sitting atop a simple sheet metal section - or the option of thin metal legs, the alwa collection is available in two sizes and a range of clear and coloured glass tops.

YEAR OF DESIGN
2015

MATERIAL
casted glass;
powder coated steel

DIMENSIONS (mm)
alwa one
Ø 380 x 440 H
alwa one big
Ø 560 x 350 H

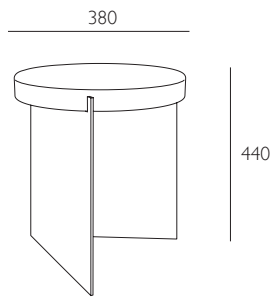
COLOURS + ART. NR

TOP GLASS	amber	amber	green	green	somky grey	somky grey
BASE STEEL	black	silver	black	silver	black	silver
alwa one	5500Y-D	5500Y-SI	5500GRE-D	5500GRE-SI	5500G-D	5500G-SI
alwa one big	5501Y-D	5501Y-SI	5501GRE-D	5501GRE-SI	5501G-D	5501G-SI
TOP GLASS	transparent	transparent	blue	blue	black	white
BASE STEEL	black	silver	black	silver	black	black
alwa one	5500T-D	5500T-SI	5500B-D	5500B-SI	5500BE	5500W-D
alwa one big	5501T-D	5501T-SI	5501B-D	5501B-SI	5501BE	5501W-D

PROCESS
Each piece is created from transparent or coloured cast glass. Bubbles, streaks and other variations in size and colour are part of the production process, and not defects of the design or production.

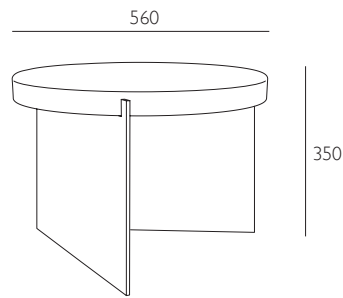
alwa one

Ø 380 x 440 H



alwa one big

Ø 560 x 350 H



CARE INSTRUCTIONS

Regular cleaning and maintenance is important in order to keep your pulpo product looking its best and to prolong its life. Always remove any kind of dirt as soon as possible. We recommend that you first test a small, invisible area to ensure that no colour change or damage arises to the product. Do not use materials for maintenance that contain abrasive agents or are basic, acid or organic.

METAL CLEANING

STEEL POWDER COATED

For dusting and light cleaning of the base, use a soft and dry cloth. For further cleaning, gently wipe the surface with a soft cloth wrung in clean water and a neutral detergent or soap flakes of good quality. Dry immediately afterwards with a soft, dry and clean cloth. For the best maintenance of the product, care for it regularly, protect it against direct sunlight and heat, and try to keep it away from moisture, grease, and other dirt. Furthermore, protect the surfaces against sharp objects and other that might scratch.

GLASS CLEANING

For dusting and light cleaning of glass use a soft, dry cloth. For further cleaning gently wipe the surface with a soft cloth wrung in clean water and a non-abrasive commercial glass cleaner. Dry immediately afterwards with a soft, dry and clean cloth. Please note that bubbles, streaks and other variations in size and colour are part of the production process, and not defects of the design or production of handmade glass.